

MONTHLY MEMBERSHIP PROGRESS REPORT

LOCATION FLORIDA

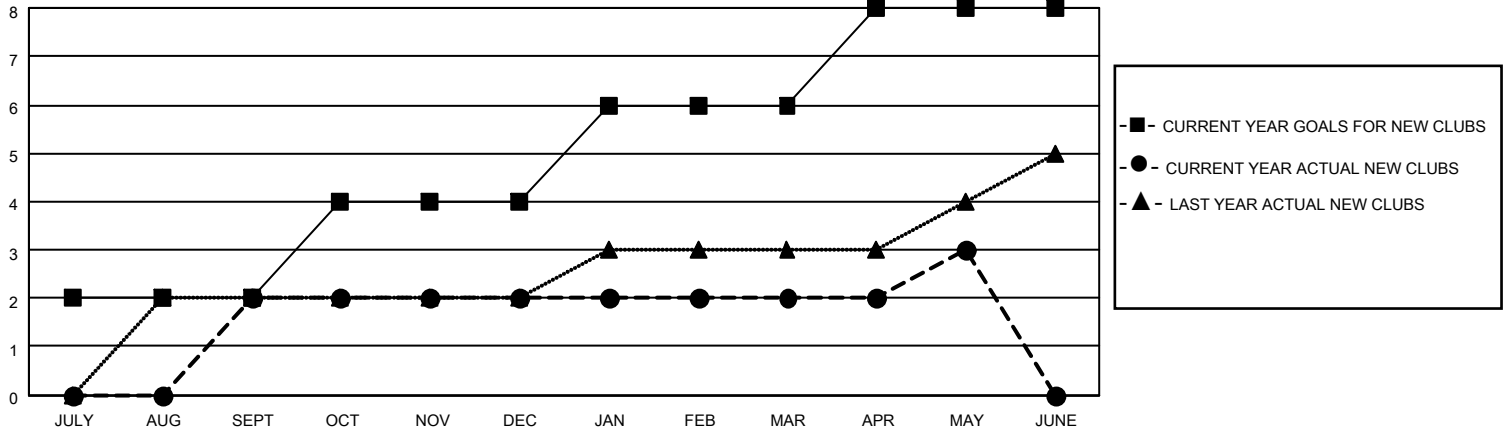
District 35 L

Results as of: 5/31/2023

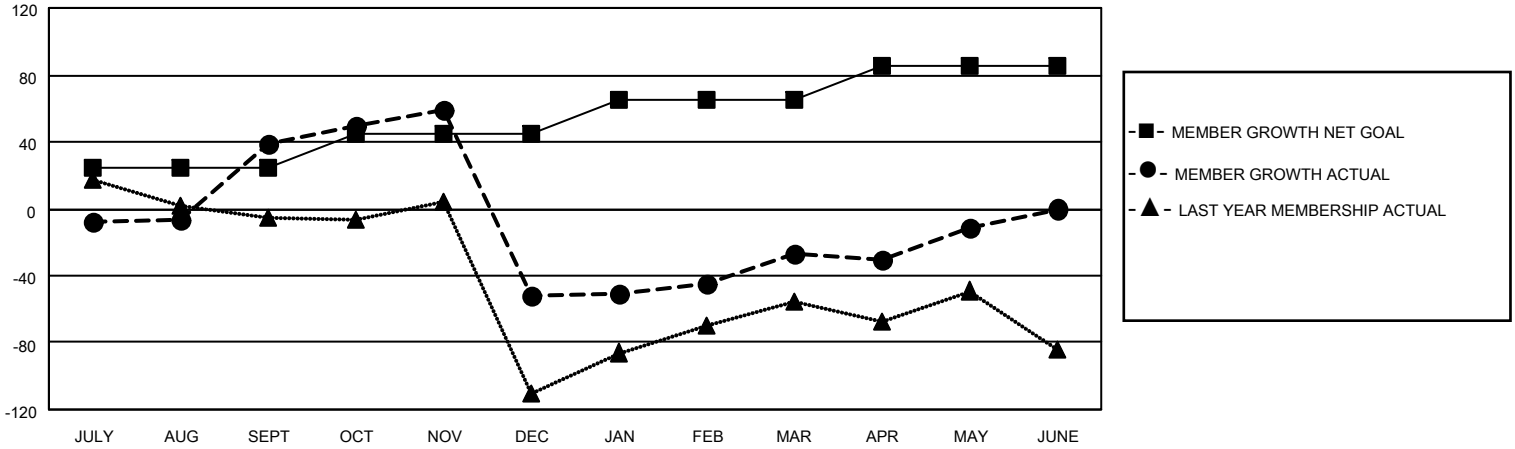
Clubs			
RESULTS FOR 2022-2023			
QUARTER	NEW CLUB GOAL	NEW CLUBS	DROPPED CLUBS
JULY/AUG/SEPT	2	2	3
OCT/NOV/DEC	2	0	4
JAN/FEB/MAR	2	0	0
APR/MAY/JUNE	2	1	0

Members			
RESULTS FOR 2022-2023			
QUARTER	MEMBER GROWTH NET GOAL	MEMBER GROWTH ACTUAL	DROPPED MEMBERS ACTUAL (including transfers)
JULY/AUG/SEPT	25	96	40
OCT/NOV/DEC	20	58	141
JAN/FEB/MAR	20	76	34
APR/MAY/JUNE	20	50	29

GOALS AND ACTUAL NEW CLUBS CUMULATIVE



GOALS AND ACTUAL MEMBERS CUMULATIVE



DROPPED CLUBS: 7

42 CLUBS OF 66 ADDED 1 OR MORE NEW MEMBERS

GENDER DISTRIBUTION

MALE	723 (58.40%)
FEMALE	513 (41.44%)
NON BINARY	1 (0.08%)
PREFER NOT TO ANSWER	1 (0.08%)

DROPPED MEMBERS

[CLICK HERE FOR CUMULATIVE MEMBERSHIP DATA](#)

DECEASED	21
CLUB CANCELLED	36
OTHER	187
TOTAL	244

TOTAL FAMILY UNIT MEMBERS 262

FAMILY MEMBERS PAYING HALF DUES 132